

Appendix A Addendum

Report to Inform Screening for Appropriate Assessment





ORIEL WIND FARM PROJECT

Natura Impact Statement Addendum

Appendix A Addendum - Report to Inform Screening for Appropriate Assessment

MDR1520C
NIS – Appendix A Addendum
A1 C01
December 2025

ORIEL WIND FARM PROJECT – REPORT TO INFORM SCREENING FOR APPROPRIATE ASSESSMENT – ADDENDUM

Contents

	Glossary	iv
	Acronyms	v
	Units	vii
1	INTRODUCTION	1
1.1	Scope of report	3
1.2	Legislative context	3
1.2.1	The Habitats Directive	3
1.2.2	Irish legislation	3
1.2.3	UK departure from the EU	3
1.2.4	Step-wise procedure	3
1.3	Document structure	3
2	PROJECT DESCRIPTION	4
3	METHODOLOGY	5
3.1	Appropriate Assessment guidance	5
3.2	Relevant European sites	5
3.2.1	Zone of Influence	5
3.2.2	Source-pathway-receptor model	6
3.2.3	Likely significant effect	6
3.2.4	Consideration of <i>ex-situ</i> effects	6
3.2.5	Conservation objectives	6
3.2.6	In-combination effects	6
4	STAGE 1 SCREENING APPRAISAL TO INFORM SCREENING FOR APPROPRIATE ASSESSMENT	7
4.1	Management of European sites	7
4.2	Summary of information required	7
4.3	European sites	7
4.4	Assessment of likely significant effects	17
4.4.1	Annex I Habitats	17
4.4.2	Annex II flora	17
4.4.3	Annex II marine mammals	17
4.4.4	Annex II terrestrial and freshwater mammals	17
4.4.5	Annex II fish	17
4.4.6	Annex II invertebrates	17
4.4.7	Birds directive and special conservation interests	17
4.5	In-combination Assessment	18
4.5.1	Plans	18
4.5.2	Projects	18
4.5.3	In-combination conclusion	18
4.6	Key findings	19
4.6.1	Summary of stage 1 screening appraisal for SACs	19
4.6.2	Summary of stage 1 screening appraisal for SPAs	19
5	CONCLUSION	26
6	REFERENCES	28

**ORIEL WIND FARM PROJECT – REPORT TO INFORM SCREENING FOR APROPRIATE ASSESSMENT
– ADDENDUM**

Tables

Table 1A-1: Further information requested on Appropriate Assessment and details on Applicant’s response.....2

Table 4A-1: Conservation Objectives for European Sites referenced in this report.7

Table 4A-2: Summary of Stage 1 Screening Appraisal for SPAs.21

Table 5A-1: SPAs screened in for Stage 2 Appraisal for Appropriate Assessment.26

Figures

Figure 4A-1: European sites identified for Stage 1 Screening Appraisal (Overview map).....14

Oriel Wind Farm Project – Report to Inform Screening for Appropriate Assessment – Addendum

Glossary

Term	Meaning
The Applicant	This is Oriel Windfarm Ltd.
Birds Directive	European Parliament and Council Directive 2009/147/EC on the conservation of wild birds, a key legislative measure for the protection of birds in the European Union.
Catchment	An area of land contributing to a river, lake or other water body.
Cumulative Impacts	Impacts that result from incremental changes caused by other reasonably foreseeable actions alongside the project in question. This includes the impact of all other developments that were not present at the time of data collection (surveys etc.) (definition derived from DMRB (Highways Agency <i>et al.</i> , 2008)).
Foreshore	The area of the land and seabed between the high-water mark of ordinary or medium tides and the 12 nautical mile limit.
Habitat	The natural home or environment of an animal, plant, or other organism.
Joint Bay	These are concrete lined chambers, that provide a clean and dry environment for jointing the sections of cable together. Link boxes and communication chambers (C2) will also be required along the onshore cable route adjacent to each JB. These are small chambers which house connections between the joints for fibre optic cables, cable shielding and other auxiliary equipment.
Landfall	The area in which the offshore export cable make landfall and is the transitional area between the offshore cabling and the onshore cabling. The landfall is proposed at Dunary Point.
Magnitude	Size, extent and duration of an impact.
Migration	The regular seasonal movement, often north and south along a flyway, between breeding and wintering grounds.
Mitigation Measure	Measure which would avoid, reduce, or remediate an impact.
Onshore cables	Cables that transfer power from the offshore cable to the onshore substation. This includes the underground cable and its associated underground components (joint bays and link boxes). It will be located in the onshore cable route between the landfall and the onshore substation.
Onshore Cable Route	The route of the proposed underground electrical cables between the proposed landfall location and the proposed onshore substation site.
Offshore Substation (OSS)	An offshore substation is a pre-fabricated offshore structure housing electrical equipment to provide a range of functions, such as changing the voltage.
Onshore Substation Site	The site location of the proposed onshore substation.
Ornithology	Ornithology is a branch of zoology that concerns the study of birds.
Oriel Wind Farm Project	The subject of this AA.
The Project	The project as a whole, including the onshore and offshore elements.
Sensitivity	Vulnerability of a sensitive receptor to change.

Oriel Wind Farm Project – Report to Inform Screening for Appropriate Assessment – Addendum

Acronyms

Term	Meaning
AA	Appropriate Assessment
ABP	An Bord Pleanála
ACP	An Coimisiún Pleanála
AIS	Air Insulated Switchgear
BoCCI	Birds of Conservation Concern in Ireland
BTO	British Trust for Ornithology
CMU	Catchment Management Unit
CJEU	Court of Justice of the European Union
CO	Conservation Objective
DAERA	Department of Agriculture, Environment and Rural Affairs (Northern Ireland)
DaS	Dumping at Sea
DCCAE	Department of Communications, Climate Action and Environment
DECC	Department of the Environment, Climate and Communications
DoEHLG	Department of the Environment, Heritage and Local Government
DoENI	Department of the Environment Northern Ireland
DoHLGH	Department of Housing, Local Government and Heritage
EC	European Commission
EIS	Environmental Impact Statement
EMF	Electromagnetic Field
EU	European Union
GIS	Gas Insulated Switchgear
HDD	Horizontal Directional Drilling
HWM	High water Mark
IAMMWG	Inter-Agency Marine Mammal Working Group
IAQM	Institute of Air Quality Management
JNCC	Joint Nature Conservation Committee
LAT	Lowest Astronomical Tide
LCC	Louth County Council
LSE	Likely Significant Effect
MAC	Maritime Area Consent
MAPA	Maritime Area Planning Act
NE	Natural England
NECP	National Energy and Climate Plan
NIEA	Northern Ireland Environment Agency
NIS	Natura Impact Statement
NMPF	National Marine Planning Framework
NPWS	National Parks and Wildlife Services
NRA	National Roads Authority
NRW	Natural Resources Wales
OPR	Office of the Planning Regulator
ORE	Offshore Renewable Energy
OREDPA	Offshore Renewable Energy Development Plan
QI	Qualifying Interests

ORIEL WIND FARM PROJECT – REPORT TO INFORM SCREENING FOR APPROPRIATE ASSESSMENT – ADDENDUM

Term	Meaning
RBMP	River Basin Management Plan
RSPB	Royal Society for the Protection of Birds
SAC	Special Area of Conservation
SCI	Special Conservation Interests
SCOS	Special Committee On Seals
SEAI	Sustainable Energy Authority of Ireland
SNCBs	Statutory Nature Conservation Bodies
SNH	Scottish Natural Heritage
SPA	Special Protected Areas
TJB	Transition Joint Bay
Zol	Zone of Influence

ORIEL WIND FARM PROJECT – REPORT TO INFORM SCREENING FOR APROPRIATE ASSESSMENT – ADDENDUM

Units

Term	Meaning
km	Kilometre
km ²	Square kilometre
kV	Kilovolt
m	Metre
m ²	Square metre
mm	Millimetre
MW	Megawatt

Oriel Wind Farm Project – Report to Inform Screening for Appropriate Assessment – ADDENDUM

1 INTRODUCTION

This Addendum provides information to supplement the Report to Inform Screening for Appropriate Assessment (AA) for the Oriel Wind Farm Project (hereafter referred to as “the Project”). It has been prepared in response to a Request for Further Information (RFI) from An Coimisiún Pleanála (ACP) (formerly An Bord Pleanála) regarding the planning application (case reference ABP-319799-24) for the Project.

The RFI listed 19 topics in a ‘Schedule - Further Information Request’. Table 1A-1 lists the specific information requested by ACP in the schedule, that is relevant to the Appropriate Assessment screening. The details are listed according to the referencing used in the schedule (e.g. RFI 7. which refers to ‘offshore ornithology’). Table 1A-1 also indicates where the corresponding information / responses can be found within this Addendum and provides a concluding statement on any resulting updates or changes to the Report to Inform Screening for Appropriate Assessment (2024).

The section and subsection headings in this Addendum correspond to those used in the Report to Inform Screening for Appropriate Assessment (2024). The reader is directed to review the information presented in this Addendum alongside the assessment presented in the Report to Inform Screening for Appropriate Assessment.

ORIEL WIND FARM PROJECT – REPORT TO INFORM SCREENING FOR APPROPRIATE ASSESSMENT – ADDENDUM

Table 1A-1: Further information requested on Appropriate Assessment and details on Applicant's response.

Reference	Request for Further Information:	Response / Reference where information is presented	Concluding statement
7. Offshore Ornithology			
Migratory Species – Non seabirds			
7.S	The Board notes the international importance of Ireland, including Dundalk Bay SPA, for a range of waterbird species. The AA screening report does not detail the potential impacts upon and interactions of the proposed project with migratory waterbirds, with a focus on foraging and breeding birds only. It is noted that all migrating birds have been scoped in for further assessment, which is welcome, but the applicant is requested to update the AA to include a reference to potential impacts and interactions with regard to migratory waterbirds which are SCIs of SPAs. A review of the screened-out Natura 2000 sites and water bodies is required to be undertaken to ensure that the NIS has considered all relevant pathways appropriately, as well as migratory or normal flight paths of avian species.	<p>The potential impacts and interactions of the Project on migratory birds is provided in section 4.4.7.</p> <p>A review of the migratory bird species as SCIs of screened-out Natura 2000 sites was completed. Migrating birds that have been scoped in for further assessment are outlined in section 4.4.7. An updated list of sites screened-in is provided in section 4.6.2.</p> <p>The Applicant notes the reference to 'waterbodies' but assumes this is an error and instead should state 'waterbirds'.</p>	<p>The review of European sites undertaken in response to this RFI has amended the number of SPAs screened in for Stage 2 Appraisal for Appropriate Assessment from 54 SPAs to 63 SPAs.</p> <p>The SACs screened in for Stage 2 Appraisal for Appropriate Assessment have not changed.</p>
9. Marine Mammals & Megafauna			
Appropriate Assessment			
9.AA	In terms of the NIS submitted in support of the proposed development, it is noted that the Lower River Shannon SAC and West Connacht Coast SAC, located on the west coast of Ireland, are two sites with bottlenose dolphin identified as designated features. Given the noted connectivity between the west and east coasts of Ireland, the applicant is requested to justify the omission of these two important sites for this species from the screening process.	Section 3.2.1.6 of this Addendum provides detail on the justification for screening out the Lower River Shannon SAC and West Connacht Coast SAC.	There are no changes to the Report to Inform Screening for Appropriate Assessment.

ORIEL WIND FARM PROJECT – REPORT TO INFORM SCREENING FOR APPROPRIATE ASSESSMENT – ADDENDUM

1.1 Scope of report

There are no changes to the Report to Inform Screening for Appropriate Assessment.

1.2 Legislative context

1.2.1 The Habitats Directive

There are no changes to the Report to Inform Screening for Appropriate Assessment.

1.2.2 Irish legislation

There are no changes to the Report to Inform Screening for Appropriate Assessment.

1.2.3 UK departure from the EU

There are no changes to the Report to Inform Screening for Appropriate Assessment.

1.2.4 Step-wise procedure

There are no changes to the Report to Inform Screening for Appropriate Assessment.

1.3 Document structure

There are no changes to the Report to Inform Screening for Appropriate Assessment.

ORIEL WIND FARM PROJECT – REPORT TO INFORM SCREENING FOR APPROPRIATE ASSESSMENT – ADDENDUM

2 PROJECT DESCRIPTION

The project description in the Report to Inform Screening for Appropriate Assessment (2024) provides a summary of the key project elements. The Applicant has made the following design changes to address a number of the issues in the RFI.

- At Dunany, the export cable route at the landfall has been realigned and the transition joint bay locations (options 1 and 2) repositioned (within the planning application boundary) to avoid works in the cliff and remove the potential for coastal erosion.
- Between the proposed onshore substation at Stickillin and the M1, the proposed onshore cable route has been adjusted along with the locations of joint bays 1-4 (within the planning application boundary) to minimise impacts on the N33. Two temporary compound accesses have also been adjusted to ensure safe access onto the N33 (within the planning application boundary).
- The layout of the proposed temporary construction compound west of the M1 has been adjusted (within the planning application boundary) to ensure sufficient space for temporary works.
- At the proposed onshore substation at Stickillin, the access off the N33 will be reconfigured (within the planning application boundary) to allow for left in and left out traffic only.

The above changes do not change the potential impact pathways to any ecological feature considered in the Report to Inform Screening for Appropriate Assessment (2024). As all changes are within the planning application boundary, there is no change to the distance between the Project and European sites.

ORIEL WIND FARM PROJECT – REPORT TO INFORM SCREENING FOR APPROPRIATE ASSESSMENT – ADDENDUM

3 METHODOLOGY

3.1 Appropriate Assessment guidance

There are no changes to the Report to Inform Screening for Appropriate Assessment.

3.2 Relevant European sites

3.2.1 Zone of Influence

3.2.1.1 Terrestrial and freshwater

There are no changes to the Report to Inform Screening for Appropriate Assessment.

3.2.1.2 Marine processes

There are no changes to the Report to Inform Screening for Appropriate Assessment.

3.2.1.3 Benthic subtidal and intertidal ecology

There are no changes to the Report to Inform Screening for Appropriate Assessment.

3.2.1.4 Offshore ornithology

There are no changes to the Report to Inform Screening for Appropriate Assessment.

3.2.1.5 Fish and shellfish

There are no changes to the Report to Inform Screening for Appropriate Assessment.

3.2.1.6 Marine mammals

In response to RFI 9.AA, justification has been provided below for not screening in the Lower River Shannon SAC and the West Connacht Coast SAC from the screening process.

As detailed in the Report to Inform Screening for Appropriate Assessment (2024), the Regional Marine Mammal and Megafauna Study Area is defined by the Irish Sea geographic area (which includes a 100 km range from the Project, as per appendix A Report to Inform Screening for Appropriate Assessment, 2024). This captures the highly mobile nature of marine mammals that range over large distances and therefore it was important to understand the ecology of marine mammals in this wider geographic context. This is important where the ZOI for a given impact (e.g. subsea noise) may extend beyond the more localised Marine Megafauna Study Area. The Lower River Shannon SAC and West Connacht Coast SAC are located outside of this study area, on the west coast of Ireland. In line with the screening approach detailed in the Report to Inform Screening for Appropriate Assessment (2024), the potential for likely significant effects on these SACs was therefore excluded at the screening stage and they were not considered in the NIS (2024).

The Lower River Shannon SAC and West Connacht Coast SAC are located in the West Coast of Ireland Management Unit (MU), as defined by Inter-Agency Marine Mammal Working Group (IAMMWG) (2023), rather than the Irish Sea MU which covers the Irish sea geographic area. Whilst individuals can feasibly interchange between MUs and are not demographically independent, IAMMWG (2023) states 'MUs provide an indication of the most relevant spatial scales at which impacts of marine plans and developments (both alone and cumulatively) should be assessed for the key cetacean species in UK waters'. The approach adopted to screening in the Report to Inform Screening for Appropriate Assessment therefore aligns with this guidance. As reported in the latest ObSERVE report (Paradell *et al.*, 2024), in Irish waters, three distinct populations occur (Atlantic pelagic, west coast and Shannon), corresponding to separate management units, based on low genetic, social and, importantly, dispersal between populations (Louis *et al.*, 2015, Mirimin *et al.*, 2011, Nykänen *et al.*, 2018, Nykänen *et al.*, 2020). There is considered to be a low likelihood that bottlenose dolphin potentially impacted by the Project would be part of these SAC populations and so there

ORIEL WIND FARM PROJECT – REPORT TO INFORM SCREENING FOR APPROPRIATE ASSESSMENT – ADDENDUM

is no potential for a likely significant effect on the site integrity at the Lower River Shannon SAC and West Connacht Coast SAC.

Therefore, there are no changes to the Marine Mammal and Megafauna Study Area outlined in the Report to Inform Screening for Appropriate Assessment.

3.2.2 Source-pathway-receptor model

There are no changes to the Report to Inform Screening for Appropriate Assessment.

3.2.3 Likely significant effect

There are no changes to the Report to Inform Screening for Appropriate Assessment.

3.2.4 Consideration of *ex-situ* effects

There are no changes to the Report to Inform Screening for Appropriate Assessment.

3.2.5 Conservation objectives

There are no changes to the Report to Inform Screening for Appropriate Assessment.

3.2.6 In-combination effects

There are no changes to the Report to Inform Screening for Appropriate Assessment.

4 **STAGE 1 SCREENING APPRAISAL TO INFORM
SCREENING FOR APPROPRIATE ASSESSMENT**

4.1 **Management of European sites**

There are no changes to the Report to Inform Screening for Appropriate Assessment.

4.2 **Summary of information required**

There are no changes to the Report to Inform Screening for Appropriate Assessment.

4.3 **European sites**

Since the submission of the planning application in May 2024, a number of detailed Conservation Objectives (COs) (previously First Order Site-specific Conservation Objectives) for European sites referenced in the Report to Inform Screening for Appropriate Assessment (2024), have become available. An updated map of European sites has also been provided in Figure 4A-1.

An outdated reference was used for the COs relating to Stabannan-Braganstown SPA [IE0004091] in the Report to Inform Screening for Appropriate Assessment (2024) submitted with the planning application. This error has been corrected in Table 4A-1 and has not resulted in any changes to the assessment. In the Report to Inform Screening for Appropriate Assessment (2024) submitted with the planning application, three SPAs were omitted from Figure 4-1 (Inishbofin, Inishdooey and Inishbeg SPA [IE004083], Old Head of Kinsale SPA [IE004021] and Aughris Head SPA [IE004133]). This error has now been corrected in Figure 4A-1 and has not resulted in any changes to the assessment, as these three SPAs were appropriately considered in the text.

The European sites for which detailed COs are now available, include; Blackwater Bank SAC (IE002953), Codling Fault Zone SAC (IE003015), and Lambay Island SAC (IE000204). Several conservation objective documents associated with European sites have also been updated. Changes to COs and CO document versions are shown in blue text in Table 4A-1 below.

All European sites within the Zols are listed in Table 4-1 in the Report to Inform Screening for Appropriate Assessment (2024). Table 4A-1 below lists those sites where there have been changes to COs or CO document versions for European sites have been updated. All changes are shown in blue text. Table 4A-1 should be read in conjunction with Table 4-1 in the Report to Inform Screening for Appropriate Assessment (2024) which lists all other sites within the Zols (i.e. those sites with no changes to COs since May 2024).

Table 4A-1: Conservation Objectives for European Sites referenced in this report.

Site (Code), and Conservation Objective Version	Distance (km) to onshore substation site / onshore cable route / offshore wind farm area	Qualifying Interest(s) [code] * indicates Priority Habitat; and Special Conservation Interest(s) [code]. Breeding status of Special Conservation Interests noted where outlined in relevant Conservation Objective documents	Conservation Objective(s)
Republic of Ireland			
Codling Fault Zone SAC [IE003015]; Version 4 2, dated 15 June 2023 14 Jan 2025 (NPWS, 2023b 2025a)	78.1/65.8/63	Harbour porpoise (<i>Phocoena phocoena</i>) [1351] Submarine structures made by leaking gases [1180]	To maintain or restore the favourable conservation condition

ORIEL WIND FARM PROJECT – REPORT TO INFORM SCREENING FOR APPROPRIATE ASSESSMENT – ADDENDUM

Site (Code), and Conservation Objective Version	Distance (km) to onshore substation site / onshore cable route / offshore wind farm area	Qualifying Interest(s) [code] * indicates Priority Habitat; and Special Conservation Interest(s) [code]. Breeding status of Special Conservation Interests noted where outlined in relevant Conservation Objective documents	Conservation Objective(s)
Blackwater Bank SAC [IE002953]; Version 2 3, dated 14 March 2023 17 Dec 2024 (NPWS, 2023c 2024a)	149.3/145.3/151	Harbour porpoise (<i>Phocoena phocoena</i>) [1351] Sandbanks which are slightly covered by sea water all the time [1110]	To maintain or restore the favourable conservation condition
Stabannan-Braganstown SPA [IE0004091]; Version 6 (Generic) 1, dated 23 March 2021 15 November 2022 (NPWS, 2021a 2022a).	3.1/1.8/21.9	Greylag Goose (<i>Anser anser</i>) [A043]	To maintain or restore the favourable conservation condition
Dalkey Islands SPA [IE004172]; Version 8 (Generic) 1, dated 23 March 2021 29 October 2024 (NPWS, 2021a 2024b)	69.9/63.0/67.6	Roseate Tern (<i>Sterna dougallii</i>) [A192] Common Tern (<i>Sterna hirundo</i>) [A193] Arctic Tern (<i>Sterna paradisaea</i>) [A194] Oystercatcher (<i>Haematopus ostralegus</i>) [A130] Ringed Plover (<i>Charadrius hiaticula</i>) [A137] Grey Plover (<i>Pluvialis squatarola</i>) [A141] Knot (<i>Calidris canutus</i>) [A143] Sanderling (<i>Calidris alba</i>) [A144] Dunlin (<i>Calidris alpina</i>) [A149] Bar-tailed Godwit (<i>Limosa lapponica</i>) [A157] Redshank (<i>Tringa totanus</i>) [A162] Black-headed Gull (<i>Chroicocephalus ridibundus</i>) [A179]	To maintain or restore the favourable conservation condition
Lambay Island SAC [IE000204]; Version 4 2, dated 22 July 2013 17 December 2024 (NPWS, 2013d 2024c)	50.9/40.9/43.1	Grey Seal (<i>Halichoerus grypus</i>) [1364] Harbour Seal (<i>Phoca vitulina</i>) [1365] Harbour porpoise (<i>Phocoena phocoena</i>) [1351] Reefs [1170] Vegetated sea cliffs of the Atlantic and Baltic coasts [1230]	To maintain the favourable conservation condition
Ardboline Island and Horse Island SPA [IE004135]; Version 8 (Generic) 1, dated 23 March 2021 28 March 2025 (NPWS, 2021a 2025b)	151.1/151.5/173.9	Cormorant (<i>Phalacrocorax carbo</i>) [A017] Barnacle Goose (<i>Branta leucopsis</i>) [A045]	To maintain or restore the favourable conservation condition
Aughris Head SPA [IE004133]; Version 8 (Generic) 1, dated 23 March 2021 11 April 2025 (NPWS, 2021a 2025c)	154.8/155.2/178.3	Kittiwake (<i>Rissa tridactyla</i>) [A188]	To maintain or restore the favourable conservation condition

ORIEL WIND FARM PROJECT – REPORT TO INFORM SCREENING FOR APPROPRIATE ASSESSMENT – ADDENDUM

Site (Code), and Conservation Objective Version	Distance (km) to onshore substation site / onshore cable route / offshore wind farm area	Qualifying Interest(s) [code] * indicates Priority Habitat; and Special Conservation Interest(s) [code]. Breeding status of Special Conservation Interests noted where outlined in relevant Conservation Objective documents	Conservation Objective(s)
Deenish Island and Scariff Island SPA [IE004175]; Version 8 (Generic) 1, dated 23 March 2024 25 April 2025 (NPWS, 2024e 2025d)	342.6/342.8/365.8	Fulmar (<i>Fulmarus glacialis</i>) [A009] Manx Shearwater (<i>Puffinus puffinus</i>) [A013] Storm Petrel (<i>Hydrobates pelagicus</i>) [A014] Lesser Black-backed Gull (<i>Larus fuscus</i>) [A183] Arctic Tern (<i>Sterna paradisaea</i>) [A194]	To maintain or restore the favourable conservation condition.
Iveragh Peninsula SPA [IE004154]; Version 8 (Generic) 1, dated 23 March 2024 23 May 2025 (NPWS, 2024p 2025e)	308.0/308.3/331.9	Fulmar (<i>Fulmarus glacialis</i>) [A009] Kittiwake (<i>Rissa tridactyla</i>) [A188] Guillemot (<i>Uria aalge</i>) [A199] Peregrine (<i>Falco peregrinus</i>) [A103] Chough (<i>Pyrrhocorax pyrrhocorax</i>) [A346]	To maintain or restore the favourable conservation condition
Duvillaun Islands SPA [IE004111]; Version 8 (Generic) 1, dated 23 March 2024 14 March 2025 (NPWS, 2024n 2025f)	238.2/238.6/263.7	Fulmar (<i>Fulmarus glacialis</i>) [A009] Storm Petrel (<i>Hydrobates pelagicus</i>) [A014] Barnacle Goose (<i>Branta leucopsis</i>) [A045]	To maintain or restore the favourable conservation condition
Greers Isle SPA [IE004082]; Version 8 (Generic) 1, dated 23 March 2024 7 March 2025 (NPWS, 2024w 2025g)	169.1/169.5/175.2	Black-headed Gull (<i>Chroicocephalus ridibundus</i>) [A179] Common Gull (<i>Larus canus</i>) [A182] Sandwich Tern (<i>Sterna sandvicensis</i>) [A191]	To maintain or restore the favourable conservation condition
Horn Head to Fanad Head SPA [IE004194]; Version 8 (Generic) 1, dated 23 March 2024 6 June 2025 (NPWS, 2024h 2025h)	161.9/162.4/167.1	Fulmar (<i>Fulmarus glacialis</i>) [A009] Cormorant (<i>Phalacrocorax carbo</i>) [A017] Shag (<i>Phalacrocorax aristotelis</i>) [A018] Kittiwake (<i>Rissa tridactyla</i>) [A188] Guillemot (<i>Uria aalge</i>) [A199] Razorbill (<i>Alca torda</i>) [A200] Barnacle Goose (<i>Branta leucopsis</i>) [A045] Peregrine (<i>Falco peregrinus</i>) [A103] Chough (<i>Pyrrhocorax pyrrhocorax</i>) [A346] Greenland White-fronted Goose (<i>Anser albifrons flavirostris</i>) [A395]	To maintain or restore the favourable conservation condition
Illancrone and Inishkeeragh SPA [IE004132]; Version 8 (Generic) 1, dated 23 March 2024 28 March 2025 (NPWS, 2024z 2025hi)	174.8/175.2/189.6	Common Tern (<i>Sterna hirundo</i>) [A193] Arctic Tern (<i>Sterna paradisaea</i>) [A194] Little Tern (<i>Sterna albifrons</i>) [A195] Barnacle Goose (<i>Branta leucopsis</i>) [A045]	To maintain or restore the favourable conservation condition

ORIEL WIND FARM PROJECT – REPORT TO INFORM SCREENING FOR APPROPRIATE ASSESSMENT – ADDENDUM

Site (Code), and Conservation Objective Version	Distance (km) to onshore substation site / onshore cable route / offshore wind farm area	Qualifying Interest(s) [code] * indicates Priority Habitat; and Special Conservation Interest(s) [code]. Breeding status of Special Conservation Interests noted where outlined in relevant Conservation Objective documents	Conservation Objective(s)
Inishduff SPA [IE004115]; Version 8 (Generic) 1, dated 23 March 2024 04 April 2025 (NPWS, 2024a 2025j)	155.7/156.1/175.1	Shag (<i>Phalacrocorax aristotelis</i>) [A018]	To maintain or restore the favourable conservation condition
Inishglora and Inishkeeragh SPA [IE004084]; Version 8 (Generic) 1, dated 23 March 2024 04 April 2025 (NPWS, 2024a 2025k)	239.2/239.6/264.1	Cormorant (<i>Phalacrocorax carbo</i>) [A017] Shag (<i>Phalacrocorax aristotelis</i>) [A018] Lesser Black-backed Gull (<i>Larus fuscus</i>) [A183] Herring Gull (<i>Larus argentatus</i>) [A184] Arctic Tern (<i>Sterna paradisaea</i>) [A194] Storm Petrel (<i>Hydrobates pelagicus</i>) [A014] Barnacle Goose (<i>Branta leucopsis</i>) [A045]	To maintain or restore the favourable conservation condition
Keeragh Islands SPA [IE004118]; Version 8 (Generic) 1, dated 23 March 2024 02 May 2025 (NPWS, 2024t 2025l)	184.8/184.0/192.4	Cormorant (<i>Phalacrocorax carbo</i>) [A017]	To maintain or restore the favourable conservation condition
Inishtrahull SPA [IE004100], Version 8 (Generic) 1, dated 23 March 2024 18 April 2025 (NPWS, 2024u 2025m)	180.0/180.5/179.9	Shag (<i>Phalacrocorax aristotelis</i>) [A018] Common Gull (<i>Larus canus</i>) [A182] Barnacle Goose (<i>Branta leucopsis</i>) [A045]	To maintain or restore the favourable conservation condition
Inishkea Islands SPA [IE004004]; Version 8 (Generic) 1, dated 23 March 2024 11 April 2025 (NPWS, 2024a 2025n)	241.2/241.6/266.5	Shag (<i>Phalacrocorax aristotelis</i>) [A018] Common Gull (<i>Larus canus</i>) [A182] Herring Gull (<i>Larus argentatus</i>) [A184] Arctic Tern (<i>Sterna paradisaea</i>) [A194] Little Tern (<i>Sterna albifrons</i>) [A195] Barnacle Goose (<i>Branta leucopsis</i>) [A045] Ringed Plover (<i>Charadrius hiaticula</i>) [A137] Sanderling (<i>Calidris alba</i>) [A144] Purple Sandpiper (<i>Calidris maritima</i>) [A148] Turnstone (<i>Arenaria interpres</i>) [A169] Dunlin (<i>Calidris alpina schinzii</i>) [A466]	To maintain or restore the favourable conservation condition
Mid-Waterford Coast SPA [IE004193]; Version 8 (Generic) 1, dated 23 March 2024 06 August 2024 (NPWS, 2024v 2024d)	195.9/195.9/207.2	Cormorant (<i>Phalacrocorax carbo</i>) [A017] Peregrine (<i>Falco peregrinus</i>) [A103] Herring Gull (<i>Larus argentatus</i>) [A184] Chough (<i>Pyrrhocorax pyrrhocorax</i>) [A346]	To maintain or restore the favourable conservation condition

ORIEL WIND FARM PROJECT – REPORT TO INFORM SCREENING FOR APPROPRIATE ASSESSMENT – ADDENDUM

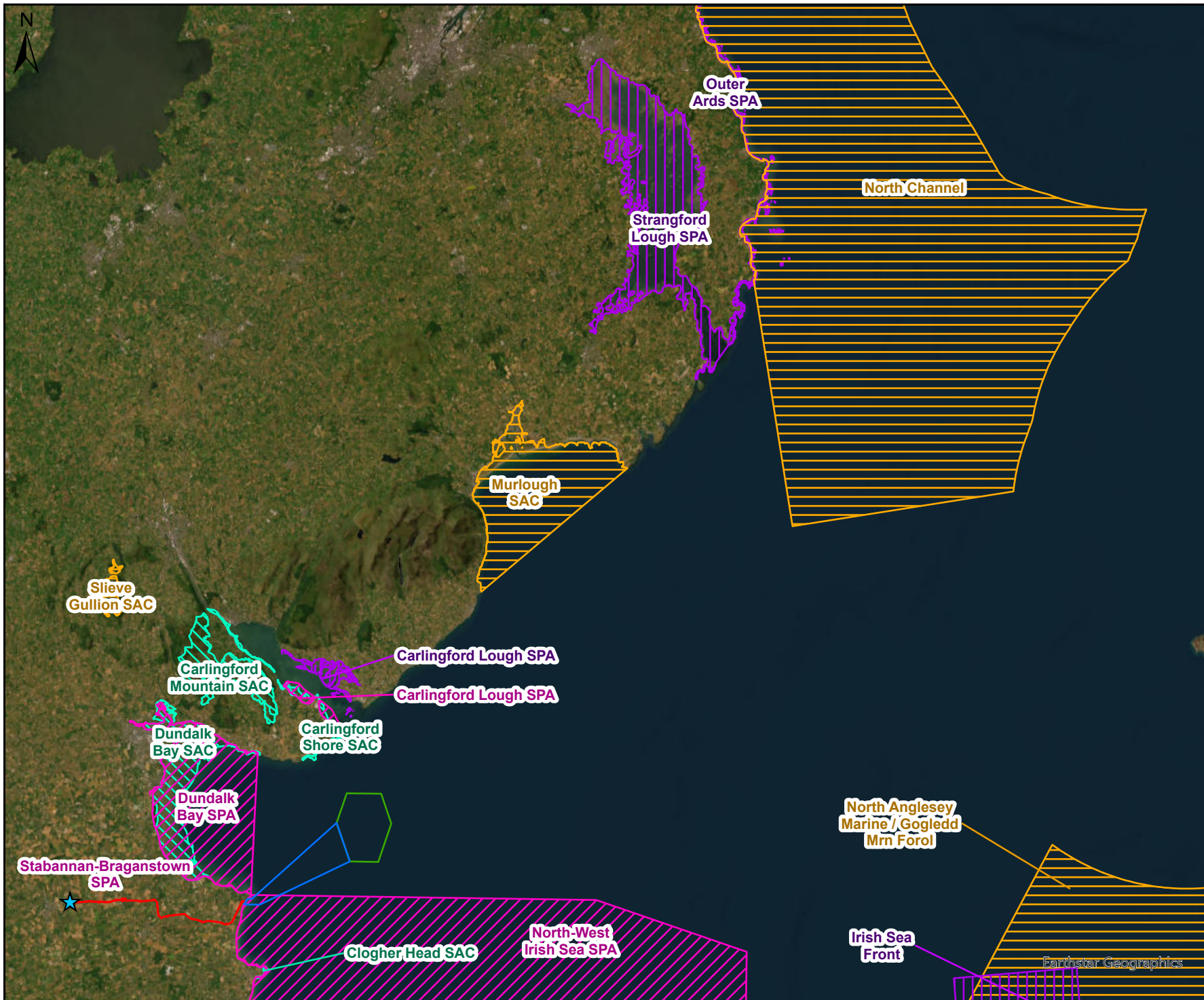
Site (Code), and Conservation Objective Version	Distance (km) to onshore substation site / onshore cable route / offshore wind farm area	Qualifying Interest(s) [code] * indicates Priority Habitat; and Special Conservation Interest(s) [code]. Breeding status of Special Conservation Interests noted where outlined in relevant Conservation Objective documents	Conservation Objective(s)
Lady's Island Lake SPA [IE004009]; Version 8 (Generic) 1, dated 23 March 2024 11 July 2025 (NPWS, 2025o)	182.8/180.3/186.9	Black-headed Gull (<i>Chroicocephalus ridibundus</i>) [A179] Sandwich Tern (<i>Sterna sandvicensis</i>) [A191] Roseate Tern (<i>Sterna dougallii</i>) [A192] Common Tern (<i>Sterna hirundo</i>) [A193] Arctic Tern (<i>Sterna paradisaea</i>) [A194] Gadwall (<i>Anas strepera</i>) [A051] Wetland and Waterbirds [A999]	To maintain or restore the favourable conservation condition
Skerries Island SPA [IE004122]; Version 8 (Generic) 1, dated 23 March 2024 19 November 2024 (NPWS, 2024e)	40.6/30.1/33.1	Herring gull (<i>Larus argentatus</i>) [A184] Cormorant (<i>Phalacrocorax carbo</i>) [A017] Shag (<i>Phalacrocorax aristotelis</i>) [A018] Light-bellied brent goose (<i>Branta bernicla hrota</i>) [A046] Purple Sandpiper (<i>Calidris maritima</i>) [A148] Turnstone (<i>Arenaria interpres</i>) [A169]	To maintain or restore the favourable conservation condition
Lambay Island SPA [IE004069]; Version 8 (Generic) 1, dated 23 March 2024 19 November 2024 (NPWS, 2024d)	50.5/40.4/42.7	Fulmar (<i>Fulmarus glacialis</i>) [A009] Cormorant (<i>Phalacrocorax carbo</i>) [A017] Shag (<i>Phalacrocorax aristotelis</i>) [A018] Lesser Black-backed Gull (<i>Larus fuscus</i>) [A183] Herring Gull (<i>Larus argentatus</i>) [A184] Kittiwake (<i>Rissa tridactyla</i>) [A188] Guillemot (<i>Uria aalge</i>) [A199] Razorbill (<i>Alca torda</i>) [A200] Puffin (<i>Fratercula arctica</i>) [A204] Greylag Goose (<i>Anser anser</i>) [A043]	To maintain or restore the favourable conservation condition
Howth Head Coast SPA [IE004113]; Version 8 (Generic) 1, dated 23 March 2024 29 October 2024 (NPWS, 2024g)	59.9/51.6/55.2	Kittiwake (<i>Rissa tridactyla</i>) [A188]	To maintain or restore the favourable conservation condition
Inishbofin, Inishdooney and Inishbeg SPA [IE004083]; Version 8 (Generic) 1, dated 23 March 2024 09 May 2025 (NPWS, 2024x 2025p)	180.4/180.9/190.6	Common Gull (<i>Larus canus</i>) [A182] Lesser Black-backed Gull (<i>Larus fuscus</i>) [A183] Arctic Tern (<i>Sterna paradisaea</i>) [A194] Barnacle Goose (<i>Branta leucopsis</i>) [A045] Corncrake (<i>Crex crex</i>) [A122]	To maintain or restore the favourable conservation condition
West Donegal Islands SPA [IE004230]; Version 8 (Generic) 1, dated 23 March 2024 16 May 2025 (NPWS, 2024y 2025q)	180.4/180.8/192.9	Shag (<i>Phalacrocorax aristotelis</i>) [A018] Common Gull (<i>Larus canus</i>) [A182] Herring Gull (<i>Larus argentatus</i>) [A184] Barnacle Goose (<i>Branta leucopsis</i>) [A045] Corncrake (<i>Crex crex</i>) [A122]	To maintain or restore the favourable conservation condition

ORIEL WIND FARM PROJECT – REPORT TO INFORM SCREENING FOR APPROPRIATE ASSESSMENT – ADDENDUM

Site (Code), and Conservation Objective Version	Distance (km) to onshore substation site / onshore cable route / offshore wind farm area	Qualifying Interest(s) [code] * indicates Priority Habitat; and Special Conservation Interest(s) [code]. Breeding status of Special Conservation Interests noted where outlined in relevant Conservation Objective documents	Conservation Objective(s)
Ireland's Eye SPA [IE004117]; Version 8 (Generic) 1, dated 23 March 2024 12 November 2024 (NPWS, 2024f 2024h)	57.3/48.9/52.7	Cormorant (<i>Phalacrocorax carbo</i>) [A017] Herring Gull (<i>Larus argentatus</i>) [A184] Kittiwake (<i>Rissa tridactyla</i>) [A188] Guillemot (<i>Uria aalge</i>) [A199] Razorbill (<i>Alca torda</i>) [A200]	To maintain or restore the favourable conservation condition
Wicklow Head SPA [IE004127]; Version 8 (Generic) 1, dated 23 March 2024 10 September 2024 (NPWS, 2024g 2024i)	103.2/97.0/101.2	Kittiwake (<i>Rissa tridactyla</i>) [A188]	To maintain or restore the favourable conservation condition
Inishmurray SPA [IE004068]; Version 8 (Generic) 1, dated 23 March 2024 09 May 2025 (NPWS, 2024a5 2025r)	153.1/153.4/174.8	Shag (<i>Phalacrocorax aristotelis</i>) [A018] Herring Gull (<i>Larus argentatus</i>) [A184] Arctic Tern (<i>Sterna paradisaea</i>) [A194] Barnacle Goose (<i>Branta leucopsis</i>) [A045]	To maintain or restore the favourable conservation condition
Old Head of Kinsale SPA [IE004021]; Version 8 (Generic) 1, dated 23 March 2024 07 March 2025 (NPWS, 2024a3 2025s)	284.5/284.6/301.9	Kittiwake (<i>Rissa tridactyla</i>) [A188] Guillemot (<i>Uria aalge</i>) [A199]	To maintain or restore the favourable conservation condition
Roaninish SPA [IE004121]; Version 8 (Generic) 1, dated 23 March 2024 14 March 2025 (NPWS, 2024a2 2025t)	172.3/172.7/188.1	Herring Gull (<i>Larus argentatus</i>) [A184] Barnacle Goose (<i>Branta leucopsis</i>) [A045]	To maintain or restore the favourable conservation condition
Skelligs SPA [IE004007]; Version 8 (Generic) 1, dated 23 March 2024 02 May 2025 (NPWS, 2024q 2025u)	354.1/354.4/378.0	Fulmar (<i>Fulmarus glacialis</i>) [A009] Manx Shearwater (<i>Puffinus puffinus</i>) [A013] Storm Petrel (<i>Hydrobates pelagicus</i>) [A014] Gannet (<i>Morus bassanus</i>) [A016] Kittiwake (<i>Rissa tridactyla</i>) [A188] Guillemot (<i>Uria aalge</i>) [A199] Puffin (<i>Fratercula arctica</i>) [A204]	To maintain or restore the favourable conservation condition
Sovereign Islands SPA [IE004124]; Version 8 (Generic) 1, dated 23 March 2024 07 March 2025 (NPWS, 2024a2 2025v)	275.6/275.7/292.9	Cormorant (<i>Phalacrocorax carbo</i>) [A017]	To maintain or restore the favourable conservation condition
Helvick Head to Ballyquin SPA [IE004192]; Version 8 (Generic) 1, dated 23 March 2024 23 May 2025 (NPWS, 2024i 2025w)	211.7/211.7/225.4	Cormorant (<i>Phalacrocorax carbo</i>) [A017] Herring Gull (<i>Larus argentatus</i>) [A184] Kittiwake (<i>Rissa tridactyla</i>) [A188] Peregrine (<i>Falco peregrinus</i>) [A103] Chough (<i>Pyrrhocorax pyrrhocorax</i>) [A346]	To maintain or restore the favourable conservation condition

ORIEL WIND FARM PROJECT – REPORT TO INFORM SCREENING FOR APPROPRIATE ASSESSMENT – ADDENDUM

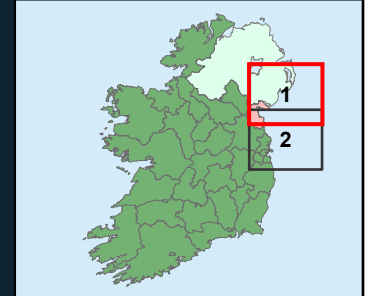
Site (Code), and Conservation Objective Version	Distance (km) to onshore substation site / onshore cable route / offshore wind farm area	Qualifying Interest(s) [code] * indicates Priority Habitat; and Special Conservation Interest(s) [code]. Breeding status of Special Conservation Interests noted where outlined in relevant Conservation Objective documents	Conservation Objective(s)
Tory Island SPA [IE004073]; Version 8 (Generic) 1, dated 23 March 2024 09 May 2025 (NPWS, 2024j 2025x)	189.1/189.6/198.6	Fulmar (<i>Fulmarus glacialis</i>) [A009] Razorbill (<i>Alca torda</i>) [A200] Puffin (<i>Fratercula arctica</i>) [A204] Corncrake (<i>Crex crex</i>) [A122]	To maintain or restore the favourable conservation condition
The Bull and The Cow Rocks SPA [IE004066]; Version 8 (Generic) 1, dated 23 March 2024 09 May 2025 (NPWS, 2024m 2025y)	357.7/357.9/380.5	Gannet (<i>Morus bassanus</i>) [A016] Puffin (<i>Fratercula arctica</i>) [A204] Storm Petrel (<i>Hydrobates pelagicus</i>) [A014]	To maintain or restore the favourable conservation condition
The Murough SPA [IE004186]; Version 8 (Generic) 1, dated 23 March 2024 08 October 2024 (NPWS, 2024s 2024j)	89.2/82.7/86.9	Light-bellied Brent Goose (<i>Branta bernicla hrota</i>) [A046] Herring Gull (<i>Larus argentatus</i>) [A184] Little Tern (<i>Sterna albifrons</i>) [A195] Red-throated Diver (<i>Gavia stellata</i>) [A001] Greylag Goose (<i>Anser anser</i>) [A043] Wigeon (<i>Anas penelope</i>) [A050] Teal (<i>Anas crecca</i>) [A052] Black-headed Gull (<i>Chroicocephalus ridibundus</i>) [A179] Wetland and Waterbirds [A999]	To maintain or restore the favourable conservation condition
West Donegal Coast SPA [IE004150]; Version 8 (Generic) 1, dated 23 March 2024 30 May 2025 (NPWS, 2024k 2025z)	158.7/159.0/177.9	Fulmar (<i>Fulmarus glacialis</i>) [A009] Cormorant (<i>Phalacrocorax carbo</i>) [A017] Shag (<i>Phalacrocorax aristotelis</i>) [A018] Herring Gull (<i>Larus argentatus</i>) [A184] Kittiwake (<i>Rissa tridactyla</i>) [A188] Razorbill (<i>Alca torda</i>) [A200] Peregrine (<i>Falco peregrinus</i>) [A103] Chough (<i>Pyrrhocorax pyrrhocorax</i>) [A346]	To maintain or restore the favourable conservation condition
Beara Peninsula SPA [IE004155]; Version 8 (Generic) 1, dated 23 March 2024 14 October 2022 (NPWS, 2024l 2022b)	332.4/332.6/354.6	Fulmar (<i>Fulmarus glacialis</i>) [A009] Chough (<i>Pyrrhocorax pyrrhocorax</i>) [A346]	To maintain or restore the favourable conservation condition



Legend

- Planning Application Boundary
- Offshore Cable Corridor
- Offshore Wind Farm Area
- Onshore Substation Site
- Special Area of Conservation (United Kingdom)
- Special Protection Area (United Kingdom)
- Special Protection Area (Ireland)
- Special Area of Conservation (Ireland)

Data Sources: OWL, NPWS, JNCC



Client



Project

Oriel Wind Farm Project

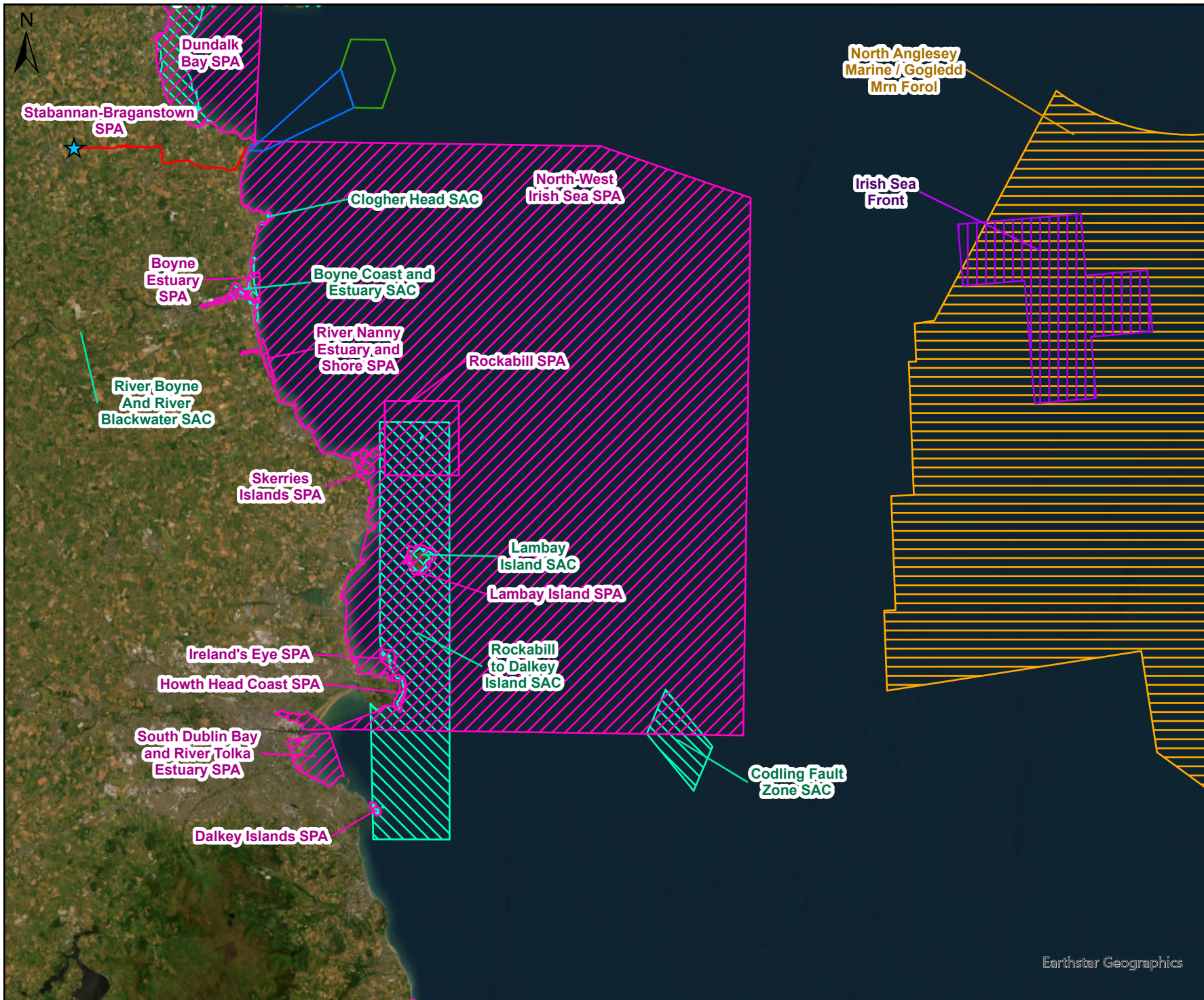
Title **Figure 4-1:
European sites identified for
Stage 1 Screening Appraisal
Map 1 of 2**

rps A TETRA TECH COMPANY
West Pier Business Campus,
Dun Laoghaire,
Co Dublin,
Ireland.
Tel: +353 (0) 1 4882900
Email: ireland@rpsgroup.com
Web Page: rpsgroup.com/ireland

Issue Details

Drawn By: NR	Project No. MDR1520c
Checked By: HF	File Ref:
Approved By: CC	MDR1520c-RPS-AP-XX-Q-Z-0038.S0.A1.C01
Scale: 1:500,000 @ A4	Projection: ITM (IRENET95) Geographic Co-ordinates: ETRS89
Date: 09/12/2025	

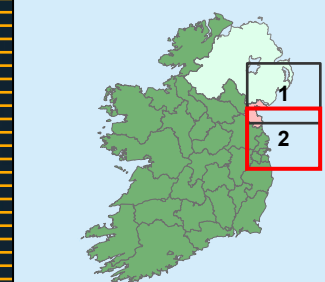
NOTE:1. This drawing is the property of RPS Group Ltd. It is a confidential document and must not be copied, used, or its contents divulged without prior written consent.
2. ©Taitte Éireann. All rights reserved. Licence number CYAL50455061



Legend

- Planning Application Boundary
- Offshore Cable Corridor
- Offshore Wind Farm Area
- Onshore Substation Site
- Special Area of Conservation (United Kingdom)
- Special Protection Area (United Kingdom)
- Special Protection Area (Ireland)
- Special Area of Conservation (Ireland)

Data Sources: OWL, NPWS, JNCC



Client



Project

Oriel Wind Farm Project

Title

Figure 4-1:
European sites identified for
Stage 1 Screening Appraisal
Map 2 of 2



West Pier Business Campus,
Dun Laoghaire,
Co Dublin,
Ireland.

Tel: +353 (0) 1 4882900
Email: ireland@rpsgroup.com
Web Page: rpsgroup.com/ireland

Issue Details

Drawn By: NR	Project No. MDR1520c
Checked By: HF	File Ref:
Approved By: CC	MDR1520c-RPS-AP-XX-D-Z-0038.S0.A1.C01
Scale: 1:500,000 @ A4	Projection:
Date: 09/12/2025	ITM (IRENET95) Geographic Co-ordinates: ETRS89

NOTE:1. This drawing is the property of RPS Group Ltd. It is a confidential document and must not be copied, used, or its contents divulged without prior written consent.
2. ©Taitte Éireann. All rights reserved. Licence number CYAL50455061

Earthstar Geographics

ORIEL WIND FARM PROJECT – REPORT TO INFORM SCREENING FOR APPROPRIATE ASSESSMENT – ADDENDUM

4.4 Assessment of likely significant effects

4.4.1 Annex I Habitats

4.4.1.1 Marine/coastal habitat

There are no changes to the Report to Inform Screening for Appropriate Assessment.

4.4.1.2 Terrestrial habitats

There are no changes to the Report to Inform Screening for Appropriate Assessment.

4.4.1.3 Freshwater habitat

There are no changes to the Report to Inform Screening for Appropriate Assessment.

4.4.2 Annex II flora

There are no changes to the Report to Inform Screening for Appropriate Assessment.

4.4.3 Annex II marine mammals

There are no changes to the Report to Inform Screening for Appropriate Assessment.

4.4.4 Annex II terrestrial and freshwater mammals

There are no changes to the Report to Inform Screening for Appropriate Assessment.

4.4.5 Annex II fish

There are no changes to the Report to Inform Screening for Appropriate Assessment.

4.4.6 Annex II invertebrates

There are no changes to the Report to Inform Screening for Appropriate Assessment.

4.4.7 Birds directive and special conservation interests

In response to RFI 7.S, as described in the Report to Inform Screening for Appropriate Assessment (2024) (see section 4.4.7), Special Conservation Interests (SCI) populations have been assessed on the basis of their foraging, breeding and migrating behaviour within the offshore ornithology Zone of Influence (Zol) of the Project. Of the 69 SCI species for which there are designated SPAs in Ireland, most are known to migrate.

There are no SPAs in Ireland which are designated specifically for migrating stages (i.e. migration corridors), therefore it is acknowledged that the migrating SCI species moving into Ireland will be part of the breeding/wintering populations for which there are SPAs designated. The Report to Inform Screening for Appropriate Assessment (see section 4.4.7, and Table 4-4) includes SPAs designated for foraging, breeding and/or wintering SCI bird species, mindful that this also includes migrating breeding and/or migrating wintering SCI birds.

Given the nature of migrating birds described here, all migrating waterbirds were scoped in for further assessment in the Report to Inform Screening for Appropriate Assessment (2024) on a precautionary basis, without specifying the SPAs for which they are an SCI feature. The potential impacts on migratory waterbirds are the same as those outlined for seabird populations of SPAs (see section 4.4.7.1 in the Report to Inform Screening for Appropriate Assessment (2024)); shorebirds, waders, and wildfowl populations of intertidal SPAs (see section 4.4.7.2); and birds of inland and coastal SPAs (see section 4.4.7.3), which include:

- Disturbance and displacement;
- Indirect disturbance and displacement resulting from changes to prey and habitats;

ORIEL WIND FARM PROJECT – REPORT TO INFORM SCREENING FOR APPROPRIATE ASSESSMENT – ADDENDUM

- Collision risk; and
- Barrier effect.

In order to more clearly describe the potential impacts a reassessment of relevant sites and SCI birds has been completed.

4.4.7.1 Seabird populations of SPAs

There are no changes to the Report to Inform Screening for Appropriate Assessment.

4.5 In-combination Assessment

There are no changes to the Report to Inform Screening for Appropriate Assessment.

4.5.1 Plans

In the Report to Inform Screening for Appropriate Assessment (2024), a number of plans were identified which had the potential for spatial conflict with the Project. A number of these plans have been updated since the submission of the planning application in May 2024. These plans are listed as follows, along with a reference to the previous title of each plan (as referenced in the Report to Inform Screening for Appropriate Assessment (2024)):

- Water Action Plan 2024: A River Basin Management Plan for Ireland (formerly Third Cycle Draft River Basin Management Plan 2022-2027);
- National Development Plan - Review 2025 (formerly National Development Plan 2018-2027);
- Climate Action Plan 2025 (formerly Climate Action Plan 2023 and Draft Climate Action Plan 2024);
- National Energy and Climate Plan 2021-2030 (updated July 2024);
- National Designated Maritime Area Plan for Offshore Renewable Energy Proposal (2025) (formerly Designated Maritime Area Plan (DMAP) Proposal for Offshore Renewable Energy and Draft DMAP));
- Project Ireland 2040 -National Planning Framework First Revision (formerly Project Ireland 2040 – National Planning Framework).

Two new plans published after May 2024 were also identified. These are as follows:

- Future Framework for Offshore Renewable Energy (DECC, 2024);
- Programme for Government 2025 – Securing Ireland’s Future (Government of Ireland, 2025).

It is not possible to rule out in-combination impacts at the Stage 1 Screening Appraisal from these updated or new plans. Therefore, these plans have been brought forward for assessment in the NIS Addendum.

4.5.2 Projects

An updated search was conducted of planning applications (projects) which were deemed relevant to the Project. A number of new projects were considered alongside updated project information. The update has resulted in no changes to the Report to Inform Screening for Appropriate Assessment (i.e. as Likely Significant Effects (LSEs) for the Project cannot be ruled out at this stage, it is therefore not possible to rule out in-combination impacts at the Stage 1 Screening Appraisal).

4.5.3 In-combination conclusion

There are no changes to the Report to Inform Screening for Appropriate Assessment.

ORIEL WIND FARM PROJECT – REPORT TO INFORM SCREENING FOR APPROPRIATE ASSESSMENT – ADDENDUM

4.6 Key findings

4.6.1 Summary of stage 1 screening appraisal for SACs

There are no changes to the Report to Inform Screening for Appropriate Assessment.

4.6.2 Summary of stage 1 screening appraisal for SPAs

In response to RFI 7.S, the Applicant notes that the following birds were screened out for further assessment due to the foraging range of the species not overlapping with the Project and/or the Project not interfering with the species breeding locations:

- Barnacle Goose (*Branta leucopsis*) [A045]
- Bewick's Swan (*Cygnus columbianus bewickii*) [A037]
- Chough (*Pyrrhocorax pyrrhocorax*) [A346]
- Coot (*Fulica atra*) [A125]
- Corncrake (*Crex crex*) [A122]
- Eider (*Somateria mollissima*) [A063]
- Gadwall (*Anas strepera*) [A051]
- Golden eagle (*Aquila chrysaetos*) [A091]
- Goldeneye (*Bucephala clangula*) [A067]
- Greenland White-fronted Goose (*Anser albifrons flavirostris*) [A395]
- Greenshank (*Tringa nebularia*) [A164]
- Grey Heron (*Ardea cinerea*) [A028]
- Hen Harrier (*Circus cyaneus*) [A082]
- Leach's petrel (*Oceanodroma leucorhoa*) [A015]
- Little egret (*Egretta garzetta*) [A026]
- Little Grebe (*Tachybaptus ruficollis*) [A004]
- Mediterranean gull (*Larus melanocephalus*) [A176]
- Peregrine (*Falco peregrinus*) [A103]
- Pink-footed goose (*Anser brachyrhynchus*) [A040]
- Purple Sandpiper (*Calidris maritima*) [A148]
- Ruff (*Philomachus pugnax*) [A151]
- Scaup (*Aythya marila*) [A062]
- Short-eared Owl (*Asio flammeus*) [A222]
- Shoveler (*Anas clypeata*) [A056]
- Slavonian Grebe (*Podiceps auritus*) [A007]
- Whooper Swan (*Cygnus cygnus*) [A038]
- Wigeon (*Anas penelope*) [A050].

Upon review, the above birds and their European sites have now been screened in for further assessment due to the potential for LSEs associated with migratory pathways. This change has arisen following a review of the impacts and interactions with regard to migratory birds. Table 4-4 in the Report to Inform Screening for Appropriate Assessment (2024) screened out these birds. Table 4A-2 below provides an update to the screening appraisal.

It should be noted that Table 4A-2 provides an update to the screening appraisal presented in Table 4-4 in relation to these specific migratory birds only. The reader is directed to review the information presented in Table 4A-2 alongside the screening appraisal presented in Table 4-4 of the Report to Inform Screening for Appropriate Assessment, noting that the information presented in Table 4A-2 supersedes the information in Table 4-4 in relation to these specific species only.

The details on the birds listed in Table 4A-2 replaces the details on the same birds in Table 4-4 in the Report to Inform Screening for Appropriate Assessment (2024). In Table 4-4 in the Report to Inform Screening for

Oriel Wind Farm Project – Report to Inform Screening for Appropriate Assessment – Addendum

Appropriate Assessment (2024), these birds were screened out and therefore there was no effect/pathway identified in the table. Table 4A-2 shows the changes in blue text.

Oriel Wind Farm Project – Report to Inform Screening for Appropriate Assessment – Addendum

Table 4A-2: Summary of Stage 1 Screening Appraisal for SPAs.

Qualifying Interest Habitat and Species	Relevant European Site(s) (code)	QI/SCI screened in/out	Summary of reasoning for screening out	Effect pathway(s) identified	Distance (km) to onshore sub-station / onshore cable route / offshore wind farm area
Birds Directive Special Conservation Interest					
Barnacle Goose (<i>Branta leucopsis</i>) [A045]	Horn Head to Fanad Head SPA (IE004194)	In	-	Migration	161.9/162.4/167.1
	Duvillaun Islands SPA (IE004111)	In	-	Migration	238.2/238.6/263.7
	Inishtrahull SPA (IE004100)	In	-	Migration	180.0/180.5/179.9
	Inishbofin, Inishdooey and Inishbeg SPA (IE004083)	In	-	Migration	180.4/180.9/190.6
	West Donegal Islands SPA (IE004230)	In	-	Migration	180.4/180.8/192.9
	Illancrone and Inishkeeragh SPA (IE004132)	In	-	Migration	174.8/175.2/189.6
	Roaninish SPA (IE004121)	In	-	Migration	172.3/172.7/188.1
	Inishmurray SPA (IE004068)	In	-	Migration	153.1/153.4/174.8
	Ardboline Island and Horse Island SPA (IE004135)	In	-	Migration	151.1/151.5/173.9
	Inishglora and Inishkeeragh SPA (IE004084)	In	-	Migration	239.2/239.6/264.1
	Inishkea Islands SPA (IE004004)	In	-	Migration	241.2/241.6/266.5
	Shiant Isles SPA (UK9001041)	In	-	Migration	445.3/445.4/435.8
Bewick's Swan (<i>Cygnus columbianus bewickii</i>) [A037]	Lough Foyle SPA (UK9020031)	In	-	Migration	136.7/137.2/137.4
	Lough Foyle SPA (IE004087)	In	-	Migration	142.3/142.7/145.1
	Wexford Harbour and Slobs SPA (IE004076)	In	-	Migration	152.1/150.8/158.6
	Ribble and Alt Estuaries SPA (UK9005103)	In	-	Migration	224.3/207.4/194.5
Chough (<i>Pyrrhocorax pyrrhocorax</i>) [A346]	Glannau Aberdaron ac Ynys Enlli SPA (UK9013121)	In	-	Migration	156.5/144.2/139.6
	West Donegal Coast SPA (IE004150)	In	-	Migration	158.7/159.0/177.9

ORIEL WIND FARM PROJECT – REPORT TO INFORM SCREENING FOR APPROPRIATE ASSESSMENT – ADDENDUM

Qualifying Interest Habitat and Species	Relevant European Site(s) (code)	QI/SCI screened in/out	Summary of reasoning for screening out	Effect pathway(s) identified	Distance (km) to onshore sub-station / onshore cable route / offshore wind farm area
	Horn Head to Fanad Head SPA (IE004194)	In	-	Migration	161.9/162.4/167.1
	Mid-Waterford Coast SPA (IE004193)	In	-	Migration	195.9/195.9/207.2
	Helvick Head to Ballyquin SPA (IE004192)	In	-	Migration	211.7/211.7/225.4
	Skomer, Skokholm and the Seas off Pembrokeshire SPA (UK9014051)	In	-	Migration	243.9/236.9/238.9
	North Colonsay and Western Cliffs SPA (UK9003171)	In	-	Migration	247.4/247.1/236.8
	Iveragh Peninsula SPA (IE004154)	In	-	Migration	308.0/308.3/331.9
	Beara Peninsula SPA (IE004155)	In	-	Migration	332.4/332.6/354.6
Coot (<i>Fulica atra</i>) [A125]	Wexford Harbour and Slobbs SPA (IE004076)	In	-	Migration	152.1/150.8/158.6
	Lough Swilly SPA (IE004075)	In	-	Migration	141.8/142.2/148.3
Corncrake (<i>Crex crex</i>) [A122]	Inishbofin, Inishdooney and Inishbeg SPA (IE004083)	In	-	Migration	180.4/180.9/190.6
	West Donegal Islands SPA (IE004230)	In	-	Migration	180.4/180.8/192.9
	Tory Island SPA [IE004073];	In	-	Migration	189.1/189.6/198.6
Eider (<i>Somateria mollissima</i>) [A063]	Lough Foyle SPA (IE004087)	In	-	Migration	142.3/142.7/145.1
Gadwall (<i>Anas strepera</i>) [A051]	Lady's Island Lake SPA (IE004009)	In	-	Migration	182.8/180.3/186.9
Golden eagle (<i>Aquila chrysaetos</i>) [A091]	Rum SPA (UK9001341)	In	-	Migration	338.1/338.2/328.6
Goldeneye (<i>Bucephala clangula</i>) [A067]	Wexford Harbour and Slobbs SPA (IE004076)	In	-	Migration	152.1/150.8/158.6
	Lough Swilly SPA (IE004075)	In	-	Migration	141.8/142.2/148.3
Greenland White-fronted Goose (<i>Anser albifrons flavirostris</i>) [A395]	Horn Head to Fanad Head SPA (IE004194)	In	-	Migration	161.9/162.4/167.1

ORIEL WIND FARM PROJECT – REPORT TO INFORM SCREENING FOR APPROPRIATE ASSESSMENT – ADDENDUM

Qualifying Interest Habitat and Species	Relevant European Site(s) (code)	QI/SCI screened in/out	Summary of reasoning for screening out	Effect pathway(s) identified	Distance (km) to onshore sub-station / onshore cable route / offshore wind farm area
	The Raven SPA (IE004019)	In	-	Migration	159.4/156.5/162.9
	Wexford Harbour and Slobbs SPA (IE004076)	In	-	Migration	152.1/150.8/158.6
	Lough Swilly SPA (IE004075)	In	-	Migration	141.8/142.2/148.3
Greenshank (<i>Tringa nebularia</i>) [A164]	Lough Swilly SPA (IE004075)	In	-	Migration	141.8/142.2/148.3
Grey Heron (<i>Ardea cinerea</i>) [A028]	Lough Swilly SPA (IE004075)	In	-	Migration	141.8/142.2/148.3
	Wexford Harbour and Slobbs SPA (IE004076)	In	-	Migration	152.1/150.8/158.6
Hen Harrier (<i>Circus cyaneus</i>) [A082]	Wexford Harbour and Slobbs SPA (IE004076)	In	-	Migration	152.1/150.8/158.6
Leach's petrel (<i>Oceanodroma leucorhoa</i>) [A015]	St Kilda SPA (UK9001031)	In	-	Migration	450.0/450.5/448.6
Little egret (<i>Egretta garzetta</i>) [A026]	Morecambe Bay and Duddon Estuary SPA (UK9020326)	In	-	Migration	202.9/186.4/170.8
Little Grebe (<i>Tachybaptus ruficollis</i>) [A004]	Wexford Harbour and Slobbs SPA (IE004076)	In	-	Migration	152.1/150.8/158.6
Mediterranean gull (<i>Larus melanocephalus</i>) [A176]	Morecambe Bay and Duddon Estuary SPA (UK9020326)	In	-	Migration	202.9/186.4/170.8
	Seas off Wexford SPA (IE004237)	In	-	Migration	144.1/145.9/145.0
Peregrine (<i>Falco peregrinus</i>) [A103]	Rathlin Island SPA (UK9020011)	In	-	Migration	156.2/155.7/145.4
	West Donegal Coast SPA (IE004150)	In	-	Migration	158.7/159.0/177.9
	Horn Head to Fanad Head SPA (IE004194)	In	-	Migration	161.9/162.4/167.1
	Mid-Waterford Coast SPA (IE004193)	In	-	Migration	195.9/195.9/207.2
	Helvick Head to Ballyquin SPA (IE004192)	In	-	Migration	211.7/211.7/225.4
	Iveragh Peninsula SPA (IE004154)	In	-	Migration	308.0/308.3/331.9

ORIEL WIND FARM PROJECT – REPORT TO INFORM SCREENING FOR APPROPRIATE ASSESSMENT – ADDENDUM

Qualifying Interest Habitat and Species	Relevant European Site(s) (code)	QI/SCI screened in/out	Summary of reasoning for screening out	Effect pathway(s) identified	Distance (km) to onshore sub-station / onshore cable route / offshore wind farm area
Pink-footed goose (<i>Anser brachyrhynchus</i>) [A040]	Ribble and Alt Estuaries SPA (UK9005103)	In	-	Migration	224.3/207.4/194.5
	Morecombe Morecambe Bay and Duddon Estuary SPA (UK9020326)	In	-	Migration	202.9/186.4/170.8
Purple Sandpiper (<i>Calidris maritima</i>) [A148]	Rockabill SPA (IE004014)	In	-	Migration	38.9/26.9/28.5
	Skerries Island SPA (IE004122)	In	-	Migration	40.6/30.1/33.1
	Inishkea Islands SPA (IE004004)	In	-	Migration	241.2/241.6/266.5
Ruff (<i>Philomachus pugnax</i>) [A151]	Morecombe Morecambe Bay and Duddon Estuary SPA (UK9020326)	In	-	Migration	202.9/186.4/170.8
	Ribble and Alt Estuaries SPA (UK9005103)	In	-	Migration	224.3/207.4/194.5
Scaup (<i>Aythya marila</i>) [A062]	Lough Swilly SPA (IE004075)	In	-	Migration	141.8/142.2/148.3
	Wexford Harbour and Slobbs SPA (IE004076)	In	-	Migration	152.1/150.8/158.6
Short-eared Owl (<i>Asio flammeus</i>) [A222]	Skomer, Skokholm and the Seas off Pembrokeshire SPA (UK9014051)	In	-	Migration	243.9/236.9/238.9
Shoveler (<i>Anas clypeata</i>) [A056]	Lough Swilly SPA (IE004075)	In	-	Migration	141.8/142.2/148.3
Slavonian Grebe (<i>Podiceps auritus</i>) [A007]	Blacksod Bay/Broad Haven SPA (IE004037)	In	-	Migration	215.6/215.6/239.7
Whooper Swan (<i>Cygnus cygnus</i>) [A038]	Lough Foyle SPA (UK9020031)	In	-	Migration	136.7/137.2/137.4
	Lough Swilly SPA (IE004075)	In	-	Migration	141.8/142.2/148.3
	Lough Foyle SPA (IE004087)	In	-	Migration	142.3/142.7/145.1
	Wexford Harbour and Slobbs SPA (IE004076)	In	-	Migration	152.1/150.8/158.6
	Morecambe Bay and Duddon Estuary SPA (UK9020326)	In	-	Migration	202.9/186.4/170.8
	Ribble and Alt Estuaries SPA (UK9005103)	In	-	Migration	224.3/207.4/194.5
Wigeon (<i>Anas penelope</i>) [A050]	The Murrough SPA (IE004186)	In	-	Migration	89.2/82.7/86.9

ORIEL WIND FARM PROJECT – REPORT TO INFORM SCREENING FOR APROPRIATE ASSESSMENT – ADDENDUM

Qualifying Interest Habitat and Species	Relevant European Site(s) (code)	QI/SCI screened in/out	Summary of reasoning for screening out	Effect pathway(s) identified	Distance (km) to onshore sub-station / onshore cable route / offshore wind farm area
	Lough Foyle SPA (UK9020031)	In	-	Migration	136.7/137.2/137.4
	Lough Swilly SPA (IE004075)	In	-	Migration	141.8/142.2/148.3
	Lough Foyle SPA (IE004087)	In	-	Migration	142.3/142.7/145.1
	Wexford Harbour and Slobbs SPA (IE004076)	In	-	Migration	152.1/150.8/158.6
	Ribble and Alt Estuaries SPA (UK9005103)	In	-	Migration	224.3/207.4/194.5
	Ballymacoda Bay SPA (IE004023)	In	-	Migration	234.0/234.1/249.3

ORIEL WIND FARM PROJECT – REPORT TO INFORM SCREENING FOR APPROPRIATE ASSESSMENT – ADDENDUM

5 CONCLUSION

This Addendum provides information in response to the RFI, which is supplementary to the information included in the Report to Inform Screening for Appropriate Assessment (2024).

The supplementary information does not change the conclusion of the Report to Inform Screening for Appropriate Assessment (2024) that it cannot be excluded, on the basis of objective scientific information, that the Project, individually or in combination with other projects, will have a significant effect on the QIs of certain SACs and the SCIs of certain SPAs and that the Project is brought forward to Stage 2 – Natura Impact Assessment. However, the review of European sites undertaken in response to the RFI has amended the number of SPAs screened in for Stage 2 Appraisal for Appropriate Assessment from 54 SPAs to 63 SPAs. The SACs screened in for Stage 2 Appraisal for Appropriate Assessment have not changed (see Table 5-1 in Report to Inform Screening for Appropriate Assessment (2024)).

LSEs cannot be ruled out for the following 63 SPAs listed in Table 5A-1. The additional SPAs are shown in blue text.

Table 5A-1: SPAs screened in for Stage 2 Appraisal for Appropriate Assessment.

Special Protection Areas
Ardboline Island and Horse Island SPA (IE004135)
Ailsa Craig SPA (UK9003091)
Ballymacoda Bay SPA (IE004023)
Beara Peninsula SPA (IE004155)
Blacksod Bay/Broad Haven SPA (IE004037)
Boyne Estuary SPA (IE004080)
Carlingford Lough SPA (IE004078)
Carlingford Lough SPA (UK9020161)
Copeland Islands SPA (UK9020291)
Dalkey Islands SPA (IE004172)
Deenish Island and Scariiff Island SPA (IE004175)
Dundalk Bay SPA (IE0004026)
Duvillaun Islands SPA (IE004111)
Glannau Aberdaron ac Ynys Enlli SPA (UK9013121)
Grassholm SPA (UK9014041)
Greers Isle SPA (IE004082)
Helvick Head to Ballyquin SPA (IE004192)
Horn Head to Fanad Head SPA (IE004194)
Howth Head Coast SPA (IE004113)
Illancrone and Inishkeeragh SPA (IE004132)
Inishglora and Inishkeeragh SPA (IE004084)
Inishtrahull SPA (IE004100)
Inishbofin, Inishdooley and Inishbeg SPA (IE004083)
Inishmurray SPA (IE004068)
Inishkea Islands SPA (IE004004)
Ireland's Eye SPA (IE004117)
Irish Sea Front SPA (UK9020328)
Iveragh Peninsula SPA (IE004154)
Lady's Island Lake SPA (IE004009)

ORIEL WIND FARM PROJECT – REPORT TO INFORM SCREENING FOR APPROPRIATE ASSESSMENT – ADDENDUM

Special Protection Areas

Lambay Island SPA (IE004069)
Liverpool Bay SPA (UK9020294)
Lough Foyle SPA (IE004087)
Lough Swilly SPA (IE004075)
Mersey Narrows and North Wirral Foreshore SPA (UK9020287)
Mid-Waterford Coast SPA (IE004193)
Mingulay and Berneray SPA (UK9001121)
Morecambe Bay and Duddon Estuary SPA (UK9020326)
North Colonsay and Western Cliffs SPA (UK9003171)
North-west Irish Sea SPA (IE004236)
Outer Ards SPA (UK9020271)
Pembrokeshire SPA (UK9014051)
Rathlin Island SPA (UK9020011)
Ribble and Alt Estuaries SPA (UK9005103)
River Nanny Estuary and Shore SPA (IE004158)
Roaninish SPA (IE004121)
Rockabill SPA (IE004014)
Rum SPA (UK9001341)
Saltee Islands SPA (IE004002)
Seas off Wexford SPA (IE004237)
Shiant Isles SPA (UK9001041)
Skelligs SPA (IE004007)
Skerries Island SPA (IE004122)
Skomer, Skokholm and the Seas off Pembrokeshire SPA (UK9014051)
South Dublin Bay and Tolka Estuary SPA (IE004024)
St Kilda SPA (UK9001031)
Stabannan-Braganstown SPA (IE0004091)
Strangford Lough SPA (UK9020111)
The Murrough SPA (IE004186)
The Raven SPA (IE004019)
Tory Island SPA (IE004073)
West Donegal Coast SPA (IE004150)
Wexford Harbour and Slobs SPA (IE004076)
Wicklow Head SPA (IE004127)

ORIEL WIND FARM PROJECT – REPORT TO INFORM SCREENING FOR APPROPRIATE ASSESSMENT – ADDENDUM

6 REFERENCES

NPWS (2022a) Conservation Objectives: Stabannan-Braganstown SPA 0004091. Version 1. National Parks and Wildlife Service, Department of Housing, Local Government and Heritage.

NPWS (2022b) Conservation Objectives: Beara Peninsula SPA 004155. Version 1. National Parks and Wildlife Service, Department of Housing, Local Government and Heritage.

NPWS (2024a) Conservation Objectives: Blackwater Bank SAC 002953. Version 3. National Parks and Wildlife Service, Department of Housing, Local Government and Heritage.

NPWS (2024b) Conservation Objectives: Dalkey Islands SPA 004172. Version 1. National Parks and Wildlife Service, Department of Housing, Local Government and Heritage.

NPWS (2024c) Conservation Objectives: Lambay Island SAC 000204. Version 2. National Parks and Wildlife Service, Department of Housing, Local Government and Heritage.

NPWS (2024d) Conservation Objectives: Mid-Waterford Coast SPA 004193. Version 1. National Parks and Wildlife Service, Department of Housing, Local Government and Heritage.

NPWS (2024e) Conservation Objectives: Skerries Island SPA 004122. Version 1. National Parks and Wildlife Service, Department of Housing, Local Government and Heritage.

NPWS (2024f) Conservation Objectives: Lambay Island SPA 004069. Version 1. National Parks and Wildlife Service, Department of Housing, Local Government and Heritage.

NPWS (2024g) Conservation Objectives: Howth Head Coast SPA 004113. Version 1. National Parks and Wildlife Service, Department of Housing, Local Government and Heritage.

NPWS (2024h) Conservation Objectives: Ireland's Eye SPA 004117. Version 1. National Parks and Wildlife Service, Department of Housing, Local Government and Heritage.

NPWS (2024i) Conservation Objectives: Wicklow Head SPA 004127. Version 1. National Parks and Wildlife Service, Department of Housing, Local Government and Heritage.

NPWS (2024j) Conservation Objectives: The Murrough SPA 004186. Version 1. National Parks and Wildlife Service, Department of Housing, Local Government and Heritage.

NPWS (2025a) Conservation Objectives: Codling Fault Zone SAC 003015. Version 2. National Parks and Wildlife Service, Department of Housing, Local Government and Heritage.

NPWS (2025b) Conservation Objectives: Ardboline Island and Horse Island SPA 004135. Version 1. National Parks and Wildlife Service, Department of Housing, Local Government and Heritage.

NPWS (2025c) Conservation Objectives: Aughris Head SPA 004133. Version 1. National Parks and Wildlife Service, Department of Housing, Local Government and Heritage.

NPWS (2025d) Conservation Objectives: Deenish Island and Scariff Island SPA 004175. Version 1. National Parks and Wildlife Service, Department of Housing, Local Government and Heritage.

NPWS (2025e) Conservation Objectives: Iveragh Peninsula SPA 004154. Version 1. National Parks and Wildlife Service, Department of Housing, Local Government and Heritage.

NPWS (2025f) Conservation Objectives: Duvillaun Islands SPA 004111. Version 1. National Parks and Wildlife Service, Department of Housing, Local Government and Heritage.

NPWS (2025g) Conservation Objectives: Greers Isle SPA 004082. Version 1. National Parks and Wildlife Service, Department of Housing, Local Government and Heritage.

ORIEL WIND FARM PROJECT – REPORT TO INFORM SCREENING FOR APPROPRIATE ASSESSMENT – ADDENDUM

NPWS (2025h) Conservation Objectives: Horn Head to Fanad Head SPA 004194. Version 1. National Parks and Wildlife Service, Department of Housing, Local Government and Heritage.

NPWS (2025i) Conservation Objectives: Illancrone and Inishkeeragh SPA 004132. Version 1. National Parks and Wildlife Service, Department of Housing, Local Government and Heritage.

NPWS (2025j) Conservation Objectives: Inishduff SPA 004115. Version 1. National Parks and Wildlife Service, Department of Housing, Local Government and Heritage.

NPWS (2025k) Conservation Objectives: Inishglora and Inishkeeragh SPA 004084. Version 1. National Parks and Wildlife Service, Department of Housing, Local Government and Heritage.

NPWS (2025l) Conservation Objectives: Keeragh Islands SPA 004118. Version 1. National Parks and Wildlife Service, Department of Housing, Local Government and Heritage.

NPWS (2025m) Conservation Objectives: Inishtrahull SPA 004100. Version 1. National Parks and Wildlife Service, Department of Housing, Local Government and Heritage.

NPWS (2025n) Conservation Objectives: Inishkea Islands SPA 004004. Version 1. National Parks and Wildlife Service, Department of Housing, Local Government and Heritage.

NPWS (2025o) Conservation Objectives: Lady's Island Lake SPA 004009. Version 1. National Parks and Wildlife Service, Department of Housing, Local Government and Heritage.

NPWS (2025p) Conservation Objectives: Inishbofin, Inishdooley and Inishbeg SPA 004083. Version 1. National Parks and Wildlife Service, Department of Housing, Local Government and Heritage.

NPWS (2025q) Conservation Objectives: West Donegal Islands SPA 00423. Version 1. National Parks and Wildlife Service, Department of Housing, Local Government and Heritage.

NPWS (2025r) Conservation Objectives: Inishmurray SPA 004068. Version 1. National Parks and Wildlife Service, Department of Housing, Local Government and Heritage.

NPWS (2025s) Conservation Objectives: Old Head of Kinsale SPA 004021. Version 1. National Parks and Wildlife Service, Department of Housing, Local Government and Heritage.

NPWS (2025t) Conservation Objectives: Roaninish SPA 004121. Version 1. National Parks and Wildlife Service, Department of Housing, Local Government and Heritage.

NPWS (2025u) Conservation Objectives: Skelligs SPA 004007. Version 1. National Parks and Wildlife Service, Department of Housing, Local Government and Heritage.

NPWS (2025v) Conservation Objectives: Sovereign Islands SPA 004124. Version 1. National Parks and Wildlife Service, Department of Housing, Local Government and Heritage.

NPWS (2025w) Conservation Objectives: Helvick Head to Ballyquin SPA 004192. Version 1. National Parks and Wildlife Service, Department of Housing, Local Government and Heritage.

NPWS (2025x) Conservation Objectives: Tory Island SPA 004073. Version 1. National Parks and Wildlife Service, Department of Housing, Local Government and Heritage.

NPWS (2025y) Conservation Objectives: The Bull and The Cow Rocks SPA 004066. Version 1. National Parks and Wildlife Service, Department of Housing, Local Government and Heritage.

NPWS (2025z) Conservation Objectives: West Donegal Coast SPA 004150. Version 1. National Parks and Wildlife Service, Department of Housing, Local Government and Heritage.